

FOXB1/FOXB2 Antibody



PACO00816

Product Information

Size:

50ug

Reactivity:

Human, Mouse

Source:

Rabbit

Isotype:

IgG

Applications:

ELISA, WB, IHC

Recommended dilutions:

WB:1:500-1:2000, IHC:1:100-1:300

Protein Background:

Gene ID:

FOXB1/FOXB2

Uniprot

Q99853/Q5VYV0

Synonyms:

FOXB1; FKH5; Forkhead box protein B1; Transcription factor FKH-5; FOXB2; Forkhead box protein B2

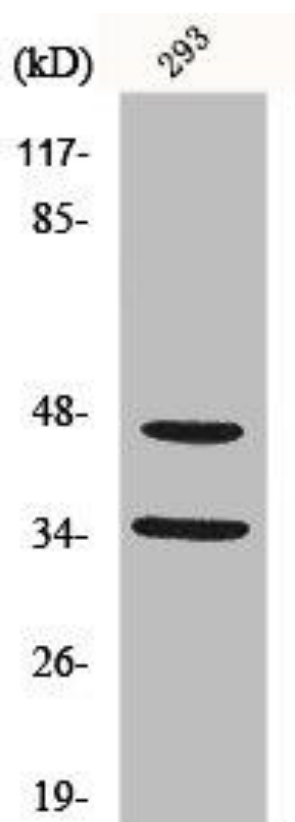
Immunogen:

Synthesized peptide derived from the Internal region of human FoxB1/2.

Storage:

Liquid in PBS containing 50% glycerol, 0.5% BSA and 0.02% sodium azide.

Product Images



Western Blot analysis of 293 cells using FoxB1/2 Polyclonal Antibody.