

FOXB2 Antibody



PACO00817

Product Information

Size:

50ug

Reactivity:

Human, Mouse

Source:

Rabbit

Isotype:

IgG

Applications:

ELISA, WB

Recommended dilutions:

WB:1:500-1:2000

Protein Background:

Gene ID:

FOXB2

Uniprot

Q5VYV0

Synonyms:

FOXB2; Forkhead box protein B2

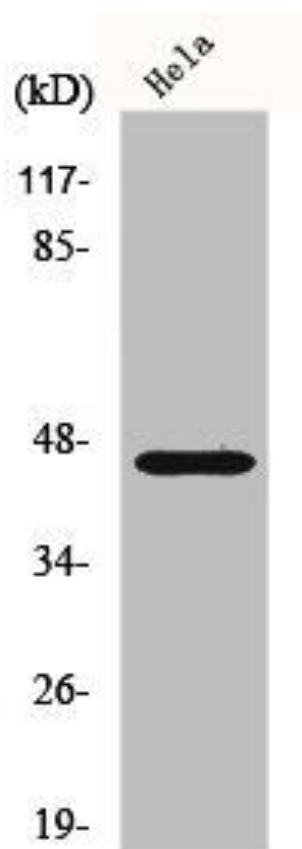
Immunogen:

Synthesized peptide derived from the Internal region of human FoxB2.

Storage:

Liquid in PBS containing 50% glycerol, 0.5% BSA and 0.02% sodium azide.

Product Images



Western Blot analysis of A549 cells using FoxB2 Polyclonal Antibody.