

FOXR1 Antibody



PACO00822

Product Information

Size:

50ug

Reactivity:

Human, Mouse

Source:

Rabbit

Isotype:

IgG

Applications:

ELISA, WB, IHC

Recommended dilutions:

WB:1:500-1:2000, IHC:1:100-1:300

Protein Background:

Gene ID:

FOXR1

Uniprot

Q6PIV2

Synonyms:

FOXR1; FOXN5; DLNB13; Forkhead box protein R1; Forkhead box protein N5

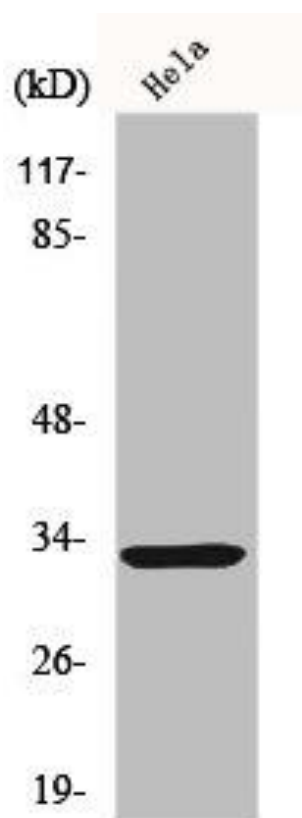
Immunogen:

Synthesized peptide derived from the C-terminal region of human FoxR1.

Storage:

Liquid in PBS containing 50% glycerol, 0.5% BSA and 0.02% sodium azide.

Product Images



Western Blot analysis of HeLa cells using FoxR1 Polyclonal Antibody.