

FRS3 Antibody



PACO00826

Product Information

Size:

50ug

Reactivity:

Human, Monkey

Source:

Rabbit

Isotype:

IgG

Applications:

ELISA, WB

Recommended dilutions:

WB:1:500-1:2000

Protein Background:**Gene ID:**

FRS3

Uniprot

O43559

Synonyms:

FRS3; Fibroblast growth factor receptor substrate 3; FGFR substrate 3; FGFR-signaling adaptor SNT2; Suc1-associated neurotrophic factor target 2; SNT-2

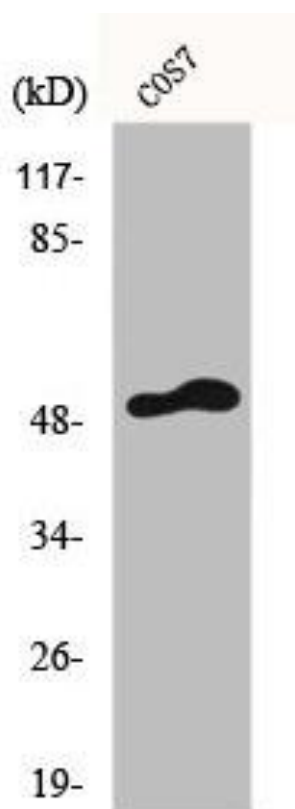
Immunogen:

Synthesized peptide derived from the Internal region of human FRS3.

Storage:

Liquid in PBS containing 50% glycerol, 0.5% BSA and 0.02% sodium azide.

Product Images



Western Blot analysis of COS7 cells using FRS3 Polyclonal Antibody.