

PACO00838

Product Information

Size:

50ug

Reactivity:

Human

Source:

Rabbit

Isotype:

IgG

Applications:

ELISA, WB

Recommended dilutions:

WB:1:500-1:2000

Protein Background:

Gene ID:

GSDMC

Uniprot

Q9BYG8

Synonyms:

GSDMC; MLZE; Gasdermin-C; Melanoma-derived leucine zipper-containing extranuclear factor

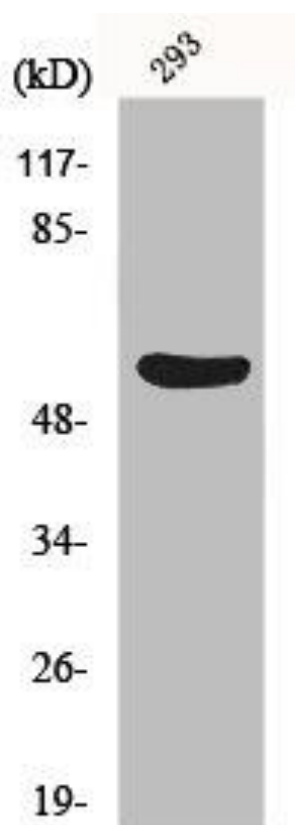
Immunogen:

Synthesized peptide derived from the Internal region of human Gasdermin C.

Storage:

Liquid in PBS containing 50% glycerol, 0.5% BSA and 0.02% sodium azide.

Product Images



Western Blot analysis of 293 cells using Gasdermin C Polyclonal Antibody.