

# GIMAP4 Antibody



PACO00852

---

## Product Information

**Size:**

50ug

**Reactivity:**

Human

**Source:**

Rabbit

**Isotype:**

IgG

**Applications:**

ELISA, WB, IHC

**Recommended dilutions:**

WB:1:500-1:2000, IHC:1:100-1:300

**Protein Background:**

**Gene ID:**

GIMAP4

**Uniprot**

Q9NUV9

**Synonyms:**

GIMAP4; IAN1; IMAP4; MSTP062; GTPase IMAP family member 4; Immunity-associated nucleotide 1 protein; IAN-1; hIAN1; Immunity-associated protein 4

**Immunogen:**

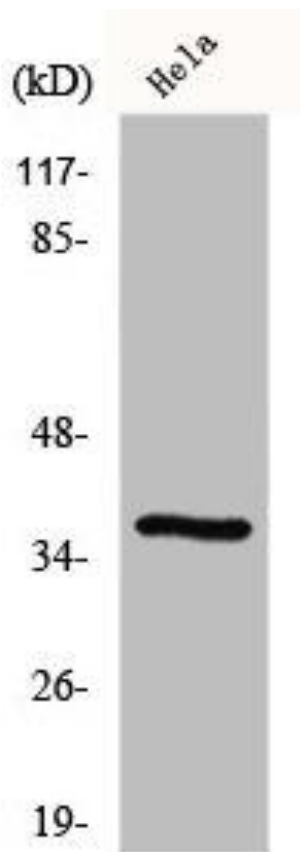
Synthesized peptide derived from the Internal region of human GIMAP4.

**Storage:**

Liquid in PBS containing 50% glycerol, 0.5% BSA and 0.02% sodium azide.

## Product Images

---



Western Blot analysis of RAW264.7 cells using GIMAP4 Polyclonal Antibody.