

PACO00856

Product Information

Size:

50ug

Reactivity:

Human

Source:

Rabbit

Isotype:

IgG

Applications:

ELISA, WB, IHC

Recommended dilutions:

WB:1:500-1:2000, IHC:1:100-1:300

Protein Background:**Gene ID:**

GK/GK3P

Uniprot

P32189/Q14409

Synonyms:

GK; Glycerol kinase; GK; Glycerokinase; ATP: glycerol 3-phosphotransferase; GK3P; GKP3; GKTB; Putative glycerol kinase 3; GK 3; Glycerokinase 3; ATP: glycerol 3-phosphotransferase 3; Glycerol kinase; testis specific 1

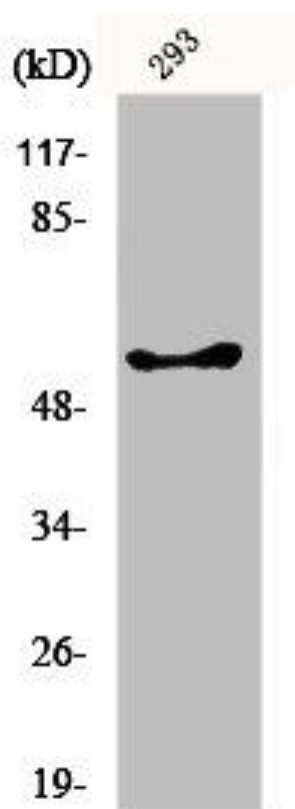
Immunogen:

Synthesized peptide derived from the N-terminal region of human GK1/3.

Storage:

Liquid in PBS containing 50% glycerol, 0.5% BSA and 0.02% sodium azide.

Product Images



Western Blot analysis of 293 cells using GK1/3 Polyclonal Antibody.