

GPR15 Antibody



PACO00868

Product Information

Size:

50ug

Reactivity:

Human, Mouse

Source:

Rabbit

Isotype:

IgG

Applications:

ELISA, WB, IF

Recommended dilutions:

WB:1:500-1:2000, IF:1:200-1:1000

Protein Background:**Gene ID:**

GPR15

Uniprot

P49685

Synonyms:

GPR15; G-protein coupled receptor 15; Brother of Bonzo; BoB

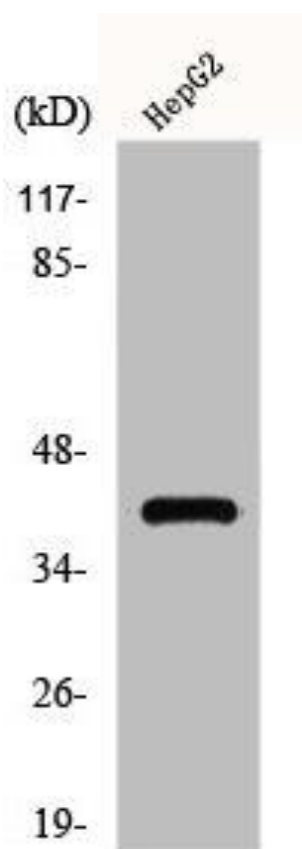
Immunogen:

Synthesized peptide derived from the Internal region of human GPR15.

Storage:

Liquid in PBS containing 50% glycerol, 0.5% BSA and 0.02% sodium azide.

Product Images



Western Blot analysis of HepG2 cells using GPR15 Polyclonal Antibody.