

GPR83 Antibody



PACO00880

Product Information

Size:

50ug

Reactivity:

Human

Source:

Rabbit

Isotype:

IgG

Applications:

ELISA, WB

Recommended dilutions:

WB:1:500-1:2000

Protein Background:**Gene ID:**

GPR83

Uniprot

Q9NYM4

Synonyms:

GPR83; GPR72; KIAA1540; Probable G-protein coupled receptor 83; G-protein coupled receptor 72

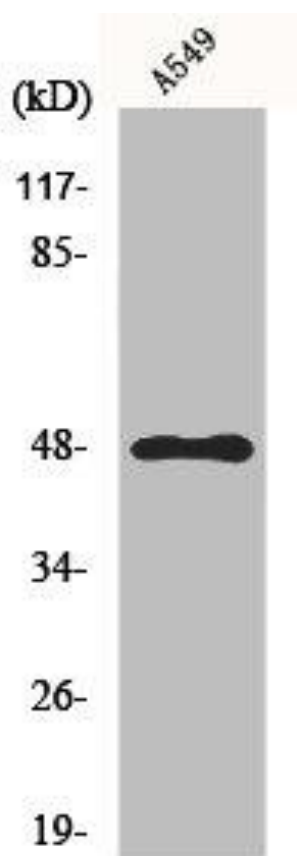
Immunogen:

Synthesized peptide derived from the C-terminal region of human GPR83.

Storage:

Liquid in PBS containing 50% glycerol, 0.5% BSA and 0.02% sodium azide.

Product Images



Western Blot analysis of HuvEc cells using GPR83 Polyclonal Antibody.