

# GRK7 Antibody



PACO00888

---

## Product Information

**Size:**

50ug

**Reactivity:**

Human

**Source:**

Rabbit

**Isotype:**

IgG

**Applications:**

ELISA, WB, IF

**Recommended dilutions:**

WB:1:500-1:2000, IF:1:200-1:1000

**Protein Background:****Gene ID:**

GRK7

**Uniprot**

Q8WTQ7

**Synonyms:**

GRK7; GPRK7; G protein-coupled receptor kinase 7; G protein-coupled receptor kinase GRK7

**Immunogen:**

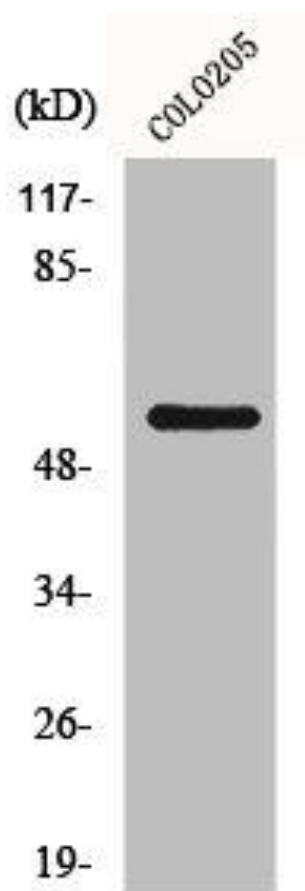
Synthesized peptide derived from the Internal region of human GRK 7.

**Storage:**

Liquid in PBS containing 50% glycerol, 0.5% BSA and 0.02% sodium azide.

## Product Images

---



Western Blot analysis of HeLa cells using GRK 7 Polyclonal Antibody.