

Histone H2B Antibody



PACO00912

Product Information

Size:

50ug

Reactivity:

Human, Mouse

Source:

Rabbit

Isotype:

IgG

Applications:

ELISA, WB, IHC, IF

Recommended dilutions:

WB:1:500-1:2000, IHC:1:100-1:300,
IF:1:200-1:1000

Protein Background:**Gene ID:**

HIST1H2BH

Uniprot

Q93079

Synonyms:

HIST1H2BH; H2BFJ; Histone H2B type 1-H; Histone H2B. j; H2B/j

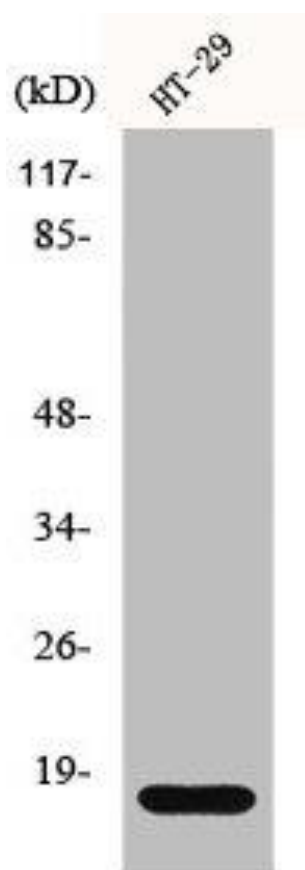
Immunogen:

Synthesized peptide derived from the N-terminal region of human Histone H2B.

Storage:

Liquid in PBS containing 50% glycerol, 0.5% BSA and 0.02% sodium azide.

Product Images



Western Blot analysis of HT29 cells using Histone H2B Polyclonal Antibody.