

HKR1 Antibody



PACO00914

Product Information

Size:

50ug

Reactivity:

Human

Source:

Rabbit

Isotype:

IgG

Applications:

ELISA, WB, IHC, IF

Recommended dilutions:

WB:1:500-1:2000, IHC:1:100-1:300,
IF:1:200-1:1000

Protein Background:

Gene ID:

HKR1

Uniprot

P10072

Synonyms:

HKR1; ZNF875; Krueppel-related zinc finger protein 1; Protein HKR1; Zinc finger protein 875

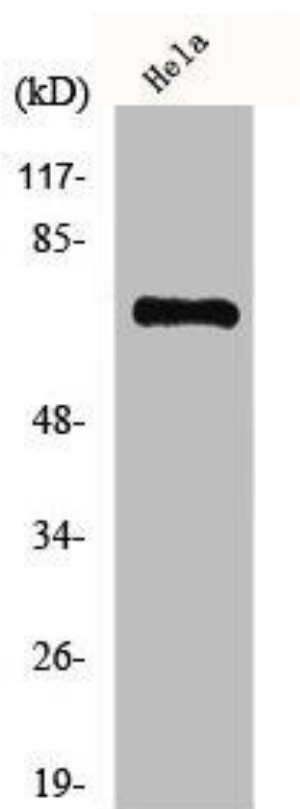
Immunogen:

Synthesized peptide derived from the Internal region of human HKR1.

Storage:

Liquid in PBS containing 50% glycerol, 0.5% BSA and 0.02% sodium azide.

Product Images



Western Blot analysis of COLO205 cells using HKR1 Polyclonal Antibody.