

EIF2AK1 Antibody



PACO00937

Product Information

Size:

50ug

Reactivity:

Human, Mouse, Monkey

Source:

Rabbit

Isotype:

IgG

Applications:

ELISA, WB, IHC

Recommended dilutions:

WB:1:500-1:2000, IHC:1:100-1:300

Protein Background:**Gene ID:**

EIF2AK1

Uniprot

Q9BQI3

Synonyms:

EIF2AK1; HRI; KIAA1369; Eukaryotic translation initiation factor 2-alpha kinase 1; Heme-controlled repressor; HCR; Heme-regulated eukaryotic initiation factor eIF-2-alpha kinase; Heme-regulated inhibitor; Hemin-sensitive initiation factor 2

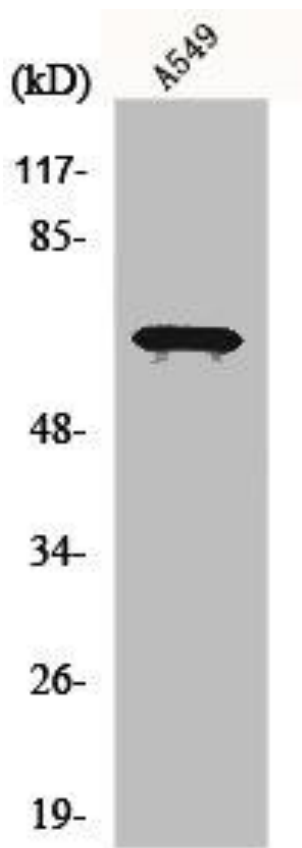
Immunogen:

Synthesized peptide derived from the C-terminal region of human HRI.

Storage:

Liquid in PBS containing 50% glycerol, 0.5% BSA and 0.02% sodium azide.

Product Images



Western Blot analysis of various cells using EIF2AK1 Polyclonal Antibody.