

# ITPKC Antibody



PACO00969

---

## Product Information

**Size:**

50ug

**Reactivity:**

Human

**Source:**

Rabbit

**Isotype:**

IgG

**Applications:**

ELISA, WB, IHC

**Recommended dilutions:**

WB:1:500-1:2000, IHC:1:100-1:300

**Protein Background:**

**Gene ID:**

ITPKC

**Uniprot**

Q96DU7

**Synonyms:**

ITPKC; IP3KC; Inositol-trisphosphate 3-kinase C; Inositol 1; 4,5-trisphosphate 3-kinase C; IP3 3-kinase C; IP3K C; InsP 3-kinase C

**Immunogen:**

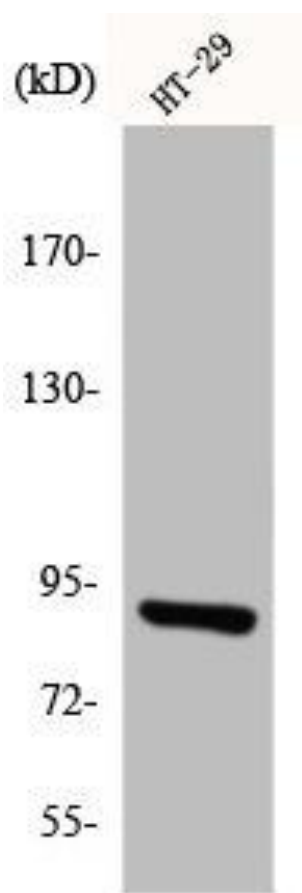
Synthesized peptide derived from the Internal region of human InsP 3-kinase C.

**Storage:**

Liquid in PBS containing 50% glycerol, 0.5% BSA and 0.02% sodium azide.

## Product Images

---



Western Blot analysis of HT29 cells using InsP 3-kinase C Polyclonal Antibody.