

ITGB4 Antibody



PACO00974

Product Information

Size:

50ug

Reactivity:

Human, Mouse, Rat

Source:

Rabbit

Isotype:

IgG

Applications:

ELISA, WB, IHC

Recommended dilutions:

WB:1:500-1:2000, IHC:1:100-1:300

Protein Background:

Gene ID:

ITGB4

Uniprot

P16144

Synonyms:

ITGB4; Integrin beta-4; GP150; CD antigen CD104

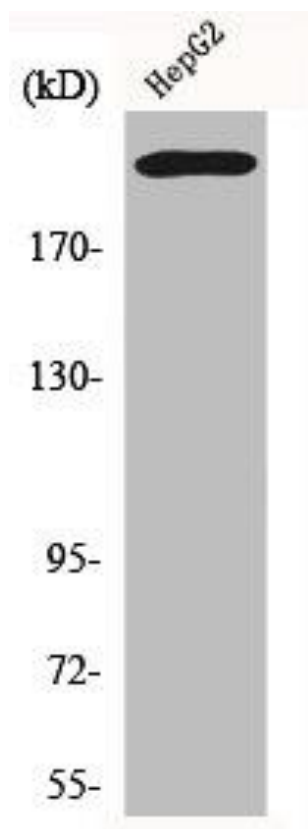
Immunogen:

Synthesized peptide derived from human Integrin Beta4 around the non-phosphorylation site of Y1510.

Storage:

Liquid in PBS containing 50% glycerol, 0.5% BSA and 0.02% sodium azide.

Product Images



Western Blot analysis of HepG2 cells using Integrin Beta4 Polyclonal Antibody.