

# IRF3 Antibody



PACO00982

---

## Product Information

**Size:**

50ug

**Reactivity:**

Human, Mouse, Rat

**Source:**

Rabbit

**Isotype:**

IgG

**Applications:**

ELISA, WB, IHC

**Recommended dilutions:**

WB:1:500-1:2000, IHC:1:100-1:300

**Protein Background:**

**Gene ID:**

IRF3

**Uniprot**

Q14653

**Synonyms:**

IRF3; Interferon regulatory factor 3; IRF-3

**Immunogen:**

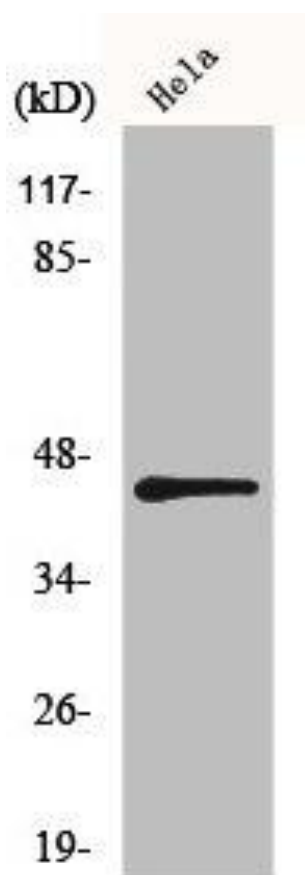
Synthesized peptide derived from human IRF-3 around the non-phosphorylation site of S396.

**Storage:**

Liquid in PBS containing 50% glycerol, 0.5% BSA and 0.02% sodium azide.

## Product Images

---



Western Blot analysis of HeLa cells using IRF-3 Polyclonal Antibody.