

ISL2 Antibody



PACO00987

Product Information

Size:

50ug

Reactivity:

Human, Mouse, Rat

Source:

Rabbit

Isotype:

IgG

Applications:

ELISA, WB, IF

Recommended dilutions:

WB:1:500-1:2000, IF:1:200-1:1000

Protein Background:

Gene ID:

ISL2

Uniprot

Q96A47

Synonyms:

ISL2; Insulin gene enhancer protein ISL-2; Islet-2

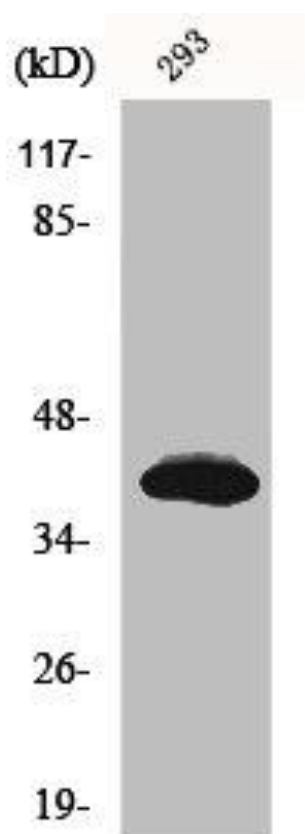
Immunogen:

Synthesized peptide derived from the Internal region of human Islet-2.

Storage:

Liquid in PBS containing 50% glycerol, 0.5% BSA and 0.02% sodium azide.

Product Images



Western Blot analysis of 293 cells using Islet-2 Polyclonal Antibody.