

MKI67 Antibody



PACO00998

Product Information

Size:

50ug

Reactivity:

Human

Source:

Rabbit

Isotype:

IgG

Applications:

ELISA, WB, IHC, IF

Recommended dilutions:

IHC:1:100-1:300, IF:1:200-1:1000

Protein Background:

Gene ID:

MKI67

Uniprot

P46013

Synonyms:

MKI67; Antigen KI-67

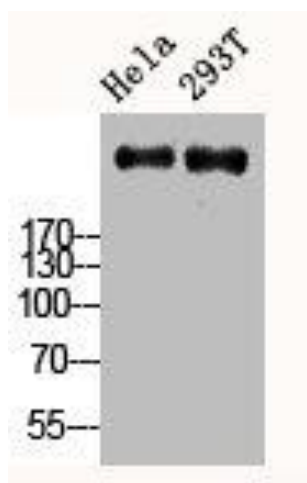
Immunogen:

Synthesized peptide derived from the C-terminal region of human Ki-67.

Storage:

Liquid in PBS containing 50% glycerol, 0.5% BSA and 0.02% sodium azide.

Product Images



Western Blot analysis of HELA 293T cells using Ki-67 Polyclonal Antibody.