

# KCNC2 Antibody



PACO01007

---

## Product Information

**Size:**

50ug

**Reactivity:**

Human, Mouse, Rat

**Source:**

Rabbit

**Isotype:**

IgG

**Applications:**

ELISA, WB, IHC

**Recommended dilutions:**

WB:1:500-1:2000, IHC:1:100-1:300

**Protein Background:****Gene ID:**

KCNC2

**Uniprot**

Q96PR1

**Synonyms:**

KCNC2; Potassium voltage-gated channel subfamily C member 2; Voltage-gated potassium channel Kv3.2

**Immunogen:**

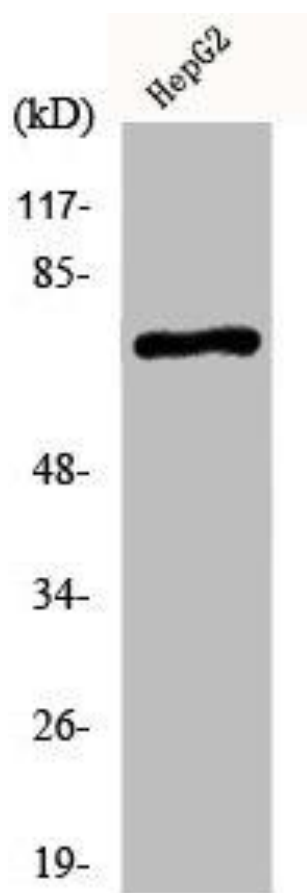
Synthesized peptide derived from the C-terminal region of human KV3.2.

**Storage:**

Liquid in PBS containing 50% glycerol, 0.5% BSA and 0.02% sodium azide.

## Product Images

---



Western Blot analysis of HepG2 cells using KV3.2 Polyclonal Antibody.