

# MARK1/MARK2/MARK3/MARK4 Antibody



PACO01041

---

## Product Information

**Size:**

50ug

**Reactivity:**

Human, Mouse, Rat

**Source:**

Rabbit

**Isotype:**

IgG

**Applications:**

ELISA, WB, IHC, IF

**Recommended dilutions:**

WB:1:500-1:2000, IHC:1:100-1:300,  
IF:1:200-1:1000

**Protein Background:****Gene ID:**

MARK1/MARK2/MARK3/MARK4

**Uniprot**

Q9P0L2/Q7KZI7/P27448/Q96L34

**Synonyms:**

MARK1; KIAA1477; MARK; Serine/threonine-protein kinase MARK1; MAP/microtubule affinity-regulating kinase 1; PAR1 homolog c; Par-1c; Par1c; MARK2; EMK1; Serine/threonine-protein kinase MARK2; ELKL motif kinase 1; EMK-1; MAP/microtubule affin

**Immunogen:**

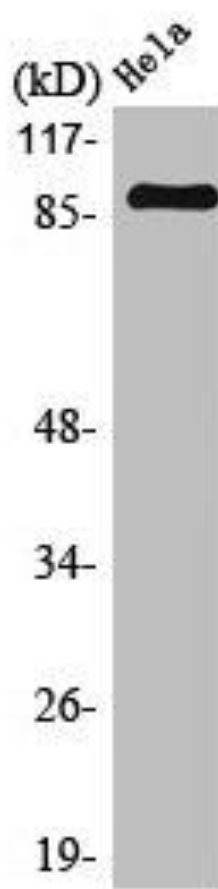
Synthesized peptide derived from the Internal region of human MARK1/2/3/4.

**Storage:**

Liquid in PBS containing 50% glycerol, 0.5% BSA and 0.02% sodium azide.

## Product Images

---



Western Blot analysis of HeLa cells using MARK1/2/3/4 Polyclonal Antibody.