

KCNMB4 Antibody



PACO01048

Product Information

Size:

50ug

Reactivity:

Human, Mouse, Rat

Source:

Rabbit

Isotype:

IgG

Applications:

ELISA, WB, IHC

Recommended dilutions:

WB:1:500-1:2000, IHC:1:100-1:300

Protein Background:**Gene ID:**

KCNMB4

Uniprot

Q86W47

Synonyms:

KCNMB4; Calcium-activated potassium channel subunit beta-4; BK channel subunit beta-4; BKbeta4; Hbeta4; Calcium-activated potassium channel; subfamily M subunit beta-4; Charybdotoxin receptor subunit beta-4; K(VCA)beta-4; Maxi K channel sub

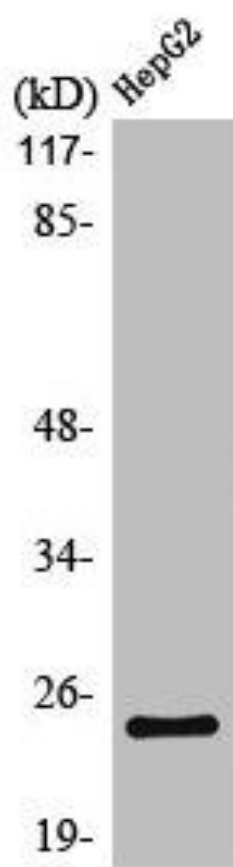
Immunogen:

Synthesized peptide derived from the Internal region of human MaxiKBeta.

Storage:

Liquid in PBS containing 50% glycerol, 0.5% BSA and 0.02% sodium azide.

Product Images



Western Blot analysis of HepG2 cells using MaxiKBeta Polyclonal Antibody.