

MLK4 Antibody



PACO01070

Product Information

Size:

50ug

Reactivity:

Human

Source:

Rabbit

Isotype:

IgG

Applications:

ELISA, WB

Recommended dilutions:

WB:1:500-1:2000

Protein Background:

Gene ID:

MAP3K21

Uniprot

Q5TCX8

Synonyms:

MLK4; KIAA1804; Mitogen-activated protein kinase kinase kinase MLK4; Mixed lineage kinase 4

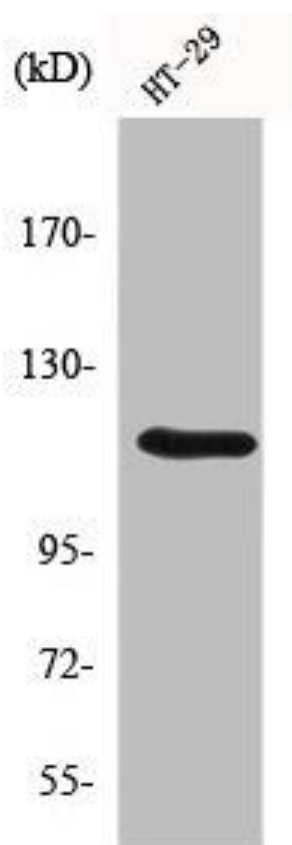
Immunogen:

Synthesized peptide derived from the Internal region of human MLK4.

Storage:

Liquid in PBS containing 50% glycerol, 0.5% BSA and 0.02% sodium azide.

Product Images



Western Blot analysis of HT29 cells using MLK4 Polyclonal Antibody.