

CDC42BPB Antibody



PACO01083

Product Information

Size:

50ug

Reactivity:

Human, Mouse, Rat

Source:

Rabbit

Isotype:

IgG

Applications:

ELISA, WB, IHC

Recommended dilutions:

WB:1:500-1:2000, IHC:1:100-1:300

Protein Background:

Gene ID:

CDC42BPB

Uniprot

Q9Y5S2

Synonyms:

CDC42BPB; KIAA1124; Serine/threonine-protein kinase MRCK beta; CDC42-binding protein kinase beta; CDC42BP-beta; DMPK-like beta; Myotonic dystrophy kinase-related CDC42-binding kinase beta; MRCK beta; Myotonic dystrophy protein kinase-like b

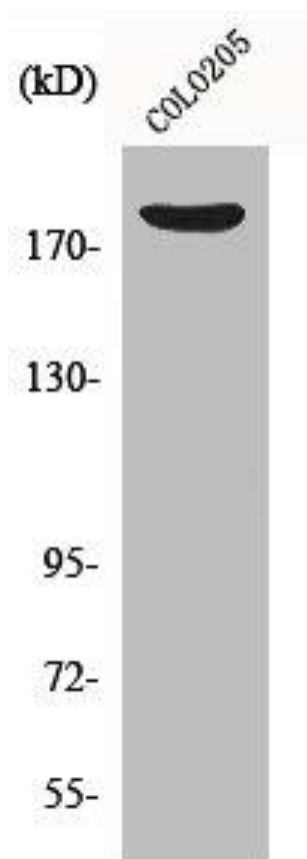
Immunogen:

Synthesized peptide derived from the C-terminal region of human MRCKBeta.

Storage:

Liquid in PBS containing 50% glycerol, 0.5% BSA and 0.02% sodium azide.

Product Images



Western Blot analysis of COLO205 cells using MRCKBeta Polyclonal Antibody.