

# MRPL16 Antibody



PACO01093

---

## Product Information

**Size:**

50ug

**Reactivity:**

Human

**Source:**

Rabbit

**Isotype:**

IgG

**Applications:**

ELISA, WB, IHC

**Recommended dilutions:**

WB:1:500-1:2000, IHC:1:100-1:300

**Protein Background:**

**Gene ID:**

MRPL16

**Uniprot**

Q9NX20

**Synonyms:**

MRPL16; PNAS-111; 39S ribosomal protein L16; mitochondrial; L16mt; MRP-L16

**Immunogen:**

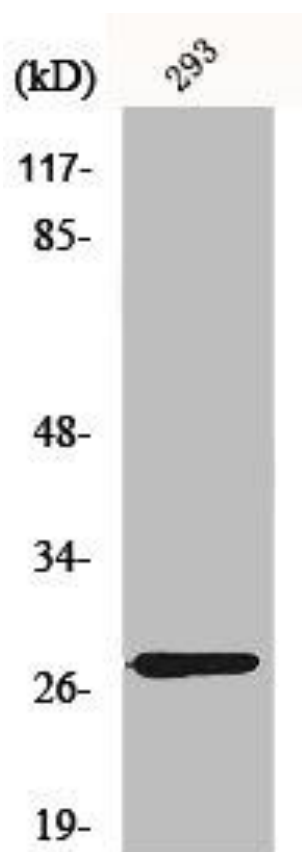
Synthesized peptide derived from the C-terminal region of human MRP-L16.

**Storage:**

Liquid in PBS containing 50% glycerol, 0.5% BSA and 0.02% sodium azide.

## Product Images

---



Western Blot analysis of 293 cells using MRP-L16 Polyclonal Antibody.