

MRPL50 Antibody



PACO01103

Product Information

Size:

50ug

Reactivity:

Human

Source:

Rabbit

Isotype:

IgG

Applications:

ELISA, WB

Recommended dilutions:

WB:1:500-1:2000

Protein Background:

Gene ID:

MRPL50

Uniprot

Q8N5N7

Synonyms:

MRPL50; 39S ribosomal protein L50; mitochondrial; L50mt; MRP-L50

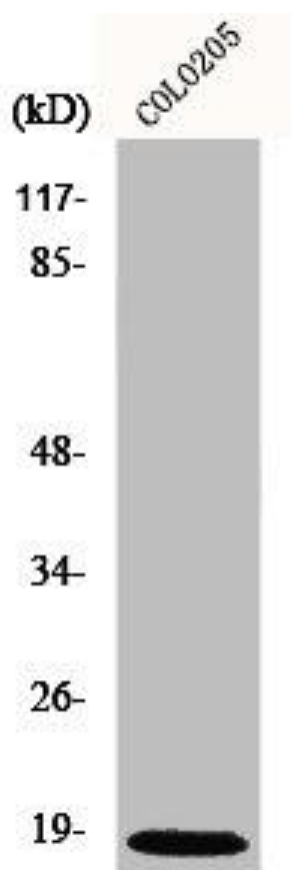
Immunogen:

Synthesized peptide derived from the C-terminal region of human MRP-L50.

Storage:

Liquid in PBS containing 50% glycerol, 0.5% BSA and 0.02% sodium azide.

Product Images



Western Blot analysis of HT29 cells using MRP-L50 Polyclonal Antibody.