

# MRPL9 Antibody



PACO01105

---

## Product Information

**Size:**

50ug

**Reactivity:**

Human

**Source:**

Rabbit

**Isotype:**

IgG

**Applications:**

ELISA, WB

**Recommended dilutions:**

WB:1:500-1:2000

**Protein Background:**

**Gene ID:**

MRPL9

**Uniprot**

Q9BYD2

**Synonyms:**

MRPL9; 39S ribosomal protein L9; mitochondrial; L9mt; MRP-L9

**Immunogen:**

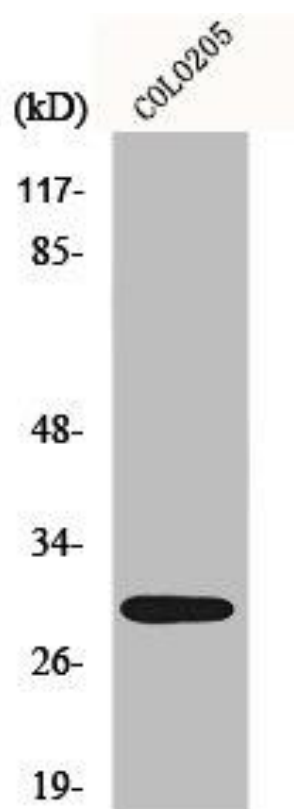
Synthesized peptide derived from the C-terminal region of human MRP-L9.

**Storage:**

Liquid in PBS containing 50% glycerol, 0.5% BSA and 0.02% sodium azide.

## Product Images

---



Western Blot analysis of COLO205 cells using MRP-L9 Polyclonal Antibody.