

MRPS21 Antibody



PACO01106

Product Information

Size:

50ug

Reactivity:

Human, Mouse, Rat, Monkey

Source:

Rabbit

Isotype:

IgG

Applications:

ELISA, WB, IHC, IF

Recommended dilutions:

WB:1:500-1:2000, IHC:1:100-1:300,
IF:1:200-1:1000

Protein Background:

Gene ID:

MRPS21

Uniprot

P82921

Synonyms:

MRPS21; RPMS21; MDS016; 28S ribosomal protein S21; mitochondrial; MRP-S21; S21mt

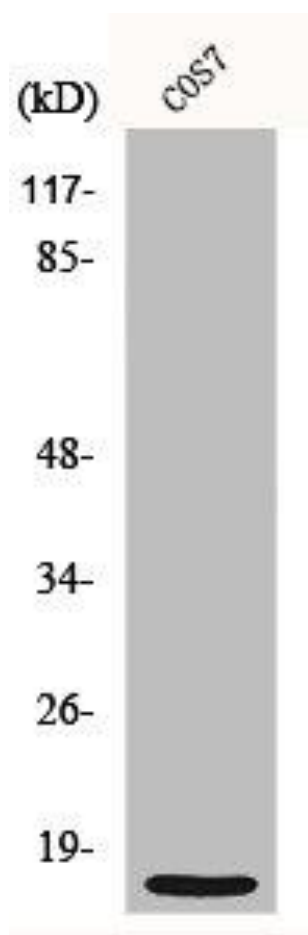
Immunogen:

Synthesized peptide derived from the Internal region of human MRP-S21.

Storage:

Liquid in PBS containing 50% glycerol, 0.5% BSA and 0.02% sodium azide.

Product Images



Western Blot analysis of COS7 cells using MRP-S21 Polyclonal Antibody.