

MRPS36 Antibody



PACO01109

Product Information

Size:

50ug

Reactivity:

Human

Source:

Rabbit

Isotype:

IgG

Applications:

ELISA, WB, IHC

Recommended dilutions:

WB:1:500-1:2000, IHC:1:100-1:300

Protein Background:**Gene ID:**

MRPS36

Uniprot

P82909

Synonyms:

MRPS36; DC47; 28S ribosomal protein S36; mitochondrial; MRP-S36; S36mt

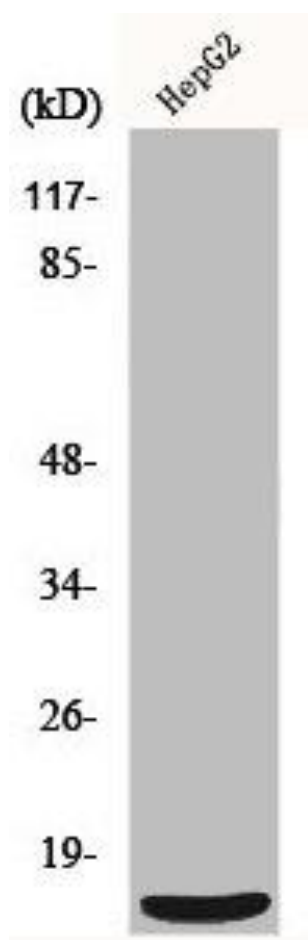
Immunogen:

Synthesized peptide derived from the N-terminal region of human MRP-S36.

Storage:

Liquid in PBS containing 50% glycerol, 0.5% BSA and 0.02% sodium azide.

Product Images



Western Blot analysis of HepG2 cells using MRP-S36 Polyclonal Antibody.