

MSH3 Antibody



PACO01112

Product Information

Size:

50ug

Reactivity:

Human

Source:

Rabbit

Isotype:

IgG

Applications:

ELISA, WB, IHC

Recommended dilutions:

WB:1:500-1:2000, IHC:1:100-1:300

Protein Background:

Gene ID:

MSH3

Uniprot

P20585

Synonyms:

MSH3; DUC1; DUG; DNA mismatch repair protein Msh3; hMSH3; Divergent upstream protein; DUP; Mismatch repair protein 1; MRP1

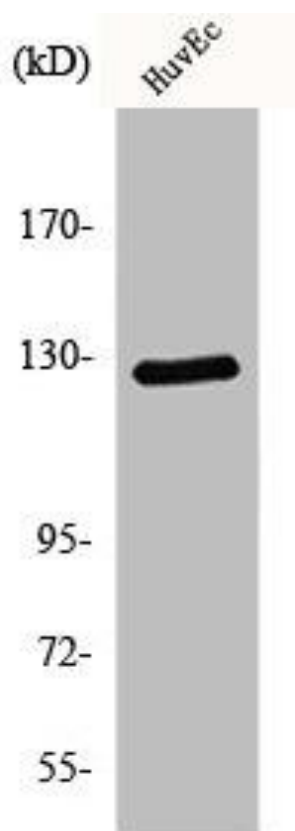
Immunogen:

Synthesized peptide derived from the N-terminal region of human MSH3.

Storage:

Liquid in PBS containing 50% glycerol, 0.5% BSA and 0.02% sodium azide.

Product Images



Western Blot analysis of HuvEc cells using MSH3 Polyclonal Antibody.