

MUC1 Antibody



PACO01119

Product Information

Size:

50ug

Reactivity:

Human

Source:

Rabbit

Isotype:

IgG

Applications:

ELISA, WB, IHC, IF

Recommended dilutions:

IHC:1:100-1:300, IF:1:200-1:1000

Protein Background:**Gene ID:**

MUC1

Uniprot

P15941

Synonyms:

MUC1; PUM; Mucin-1; MUC-1; Breast carcinoma-associated antigen DF3; Carcinoma-associated mucin; Episialin; H23AG; Krebs von den Lungen-6; KL-6; PEMT; Peanut-reactive urinary mucin; PUM; Polymorphic epithelial mucin; PEM; Tumor-associated ep

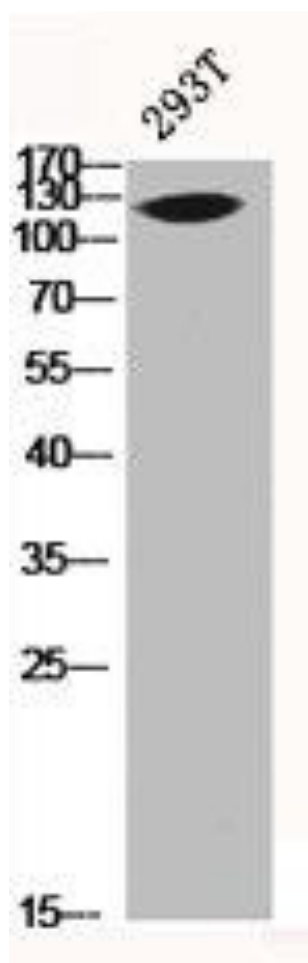
Immunogen:

Synthesized peptide derived from human Mucin 1 around the non-phosphorylation site of Y1229.

Storage:

Liquid in PBS containing 50% glycerol, 0.5% BSA and 0.02% sodium azide.

Product Images



Western Blot analysis of 293T cells using Mucin 1 Polyclonal Antibody.