

SCN1A/SCN2A/SCN3A/SCN4A/SCN5A/SCN8A/SCN10A/SCN11A Antibody

PACO01133



Product Information

Size:

50ug

Reactivity:

Human, Mouse, Rat

Source:

Rabbit

Isotype:

IgG

Applications:

ELISA, WB, IHC, IF

Recommended dilutions:

WB:1:500-1:2000, IHC:1:100-1:300,
IF:1:200-1:1000

Protein Background:**Gene ID:**

SCN1A/SCN2A/SCN3A/SCN4A/SCN5A/SCN8A/SCN9A/SCN10A/SCN11A

Uniprot

P35498/Q99250/Q9NY46/P35499/Q14524/Q9UQD0/Q15858/Q9Y5Y9/Q9UI33

Synonyms:

SCN1A; NAC1; SCN1; Sodium channel protein type 1 subunit alpha; Sodium channel protein brain I subunit alpha; Sodium channel protein type I subunit alpha; Voltage-gated sodium channel subunit alpha Nav1.1; SCN2A; NAC2; SCN2A1; SCN2A2; Sodi

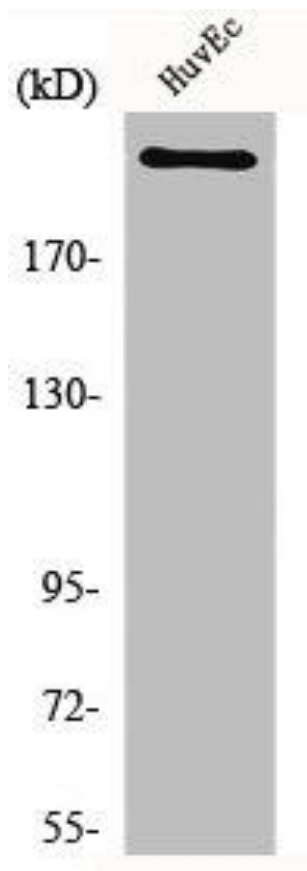
Immunogen:

Synthesized peptide derived from the Internal region of human Na⁺ CP-pan.

Storage:

Liquid in PBS containing 50% glycerol, 0.5% BSA and 0.02% sodium azide.

Product Images



Western Blot analysis of HuvEc cells using Na⁺ CP-pan Polyclonal Antibody.