

NFATC3 Antibody



PACO01168

Product Information

Size:

50ug

Reactivity:

Human, Mouse

Source:

Rabbit

Isotype:

IgG

Applications:

ELISA, WB, IHC

Recommended dilutions:

WB:1:500-1:2000, IHC:1:100-1:300

Protein Background:

Gene ID:

NFATC3

Uniprot

Q12968

Synonyms:

NFATC3; NFAT4; Nuclear factor of activated T-cells; cytoplasmic 3; NF-ATc3; NFATc3; NFATx; T-cell transcription factor NFAT4; NF-AT4

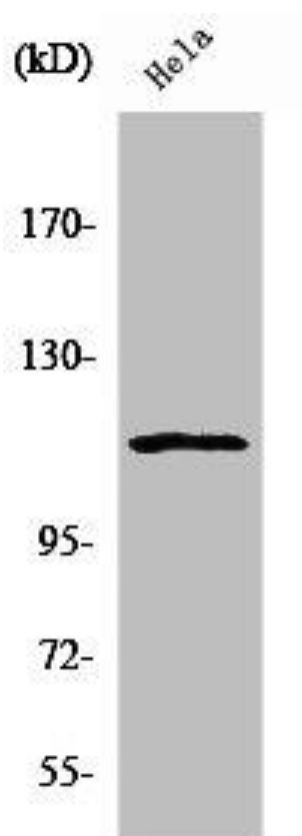
Immunogen:

Synthesized peptide derived from human NFATc3 around the non-phosphorylation site of S165.

Storage:

Liquid in PBS containing 50% glycerol, 0.5% BSA and 0.02% sodium azide.

Product Images



Western Blot analysis of HeLa cells using NFATc3 Polyclonal Antibody.