

# ZC3HC1 Antibody



PACO01174

---

## Product Information

**Size:**

50ug

**Reactivity:**

Human, Mouse, Rat, Monkey

**Source:**

Rabbit

**Isotype:**

IgG

**Applications:**

ELISA, WB, IF

**Recommended dilutions:**

WB:1:500-1:2000, IF:1:200-1:1000

**Protein Background:**

**Gene ID:**

ZC3HC1

**Uniprot**

Q86WB0

**Synonyms:**

ZC3HC1; NIPA; HSPC216; Nuclear-interacting partner of ALK; Nuclear-interacting partner of anaplastic lymphoma kinase; hNIPA; Zinc finger C3HC-type protein 1

**Immunogen:**

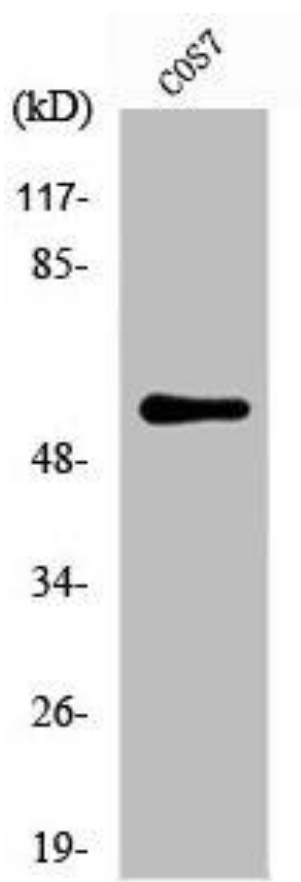
Synthesized peptide derived from human NIPA around the non-phosphorylation site of S354.

**Storage:**

Liquid in PBS containing 50% glycerol, 0.5% BSA and 0.02% sodium azide.

## Product Images

---



Western Blot analysis of COS7 cells using NIPA Polyclonal Antibody.