

# NKX2-6 Antibody



PACO01177

---

## Product Information

**Size:**

50ug

**Reactivity:**

Human

**Source:**

Rabbit

**Isotype:**

IgG

**Applications:**

ELISA, WB

**Recommended dilutions:**

WB:1:500-1:2000

**Protein Background:**

**Gene ID:**

NKX2-6

**Uniprot**

A6NCS4

**Synonyms:**

NKX2-6; NKX2F; Homeobox protein Nkx-2.6; Homeobox protein NK-2 homolog F

**Immunogen:**

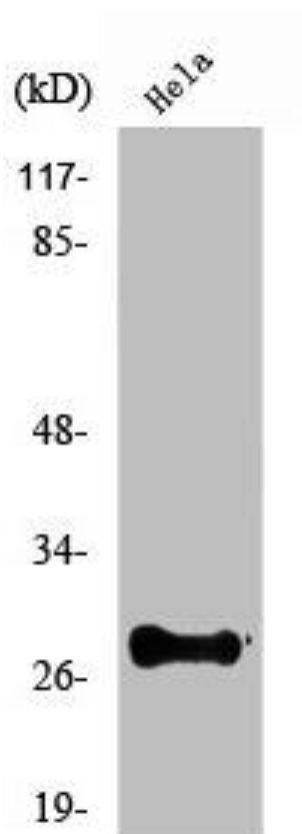
Synthesized peptide derived from the Internal region of human Nkx-2.6.

**Storage:**

Liquid in PBS containing 50% glycerol, 0.5% BSA and 0.02% sodium azide.

## Product Images

---



Western Blot analysis of COLO205 cells using Nkx-2.6 Polyclonal Antibody.