

OR4A15 Antibody



PACO01227

Product Information

Size:

50ug

Reactivity:

Human

Source:

Rabbit

Isotype:

IgG

Applications:

ELISA, WB, IF

Recommended dilutions:

WB:1:500-1:2000, IF:1:200-1:1000

Protein Background:

Gene ID:

OR4A15

Uniprot

Q8NGL6

Synonyms:

OR4A15; Olfactory receptor 4A15; Olfactory receptor OR11-118

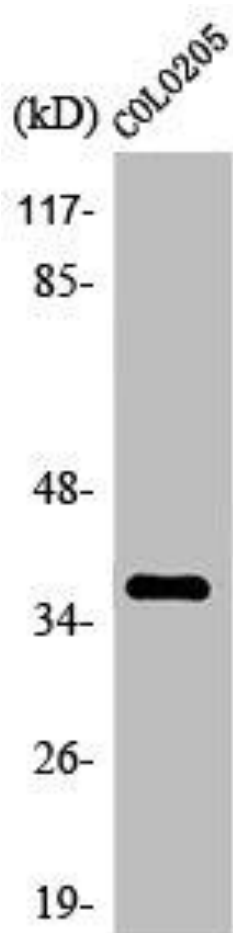
Immunogen:

Synthesized peptide derived from the C-terminal region of human Olfactory receptor 4A15.

Storage:

Liquid in PBS containing 50% glycerol, 0.5% BSA and 0.02% sodium azide.

Product Images



Western Blot analysis of HepG2 cells using Olfactory receptor 4A15 Polyclonal Antibody.