

# OR4C13 Antibody



PACO01230

---

## Product Information

**Size:**

50ug

**Reactivity:**

Human

**Source:**

Rabbit

**Isotype:**

IgG

**Applications:**

ELISA, WB, IF

**Recommended dilutions:**

WB:1:500-1:2000, IF:1:200-1:1000

**Protein Background:**

**Gene ID:**

OR4C13

**Uniprot**

Q8NGP0

**Synonyms:**

OR4C13; Olfactory receptor 4C13; Olfactory receptor OR11-260

**Immunogen:**

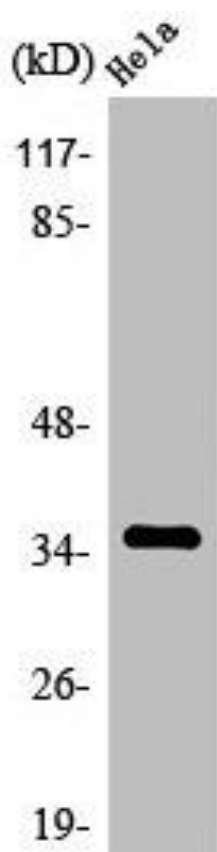
Synthesized peptide derived from the C-terminal region of human Olfactory receptor 4C13.

**Storage:**

Liquid in PBS containing 50% glycerol, 0.5% BSA and 0.02% sodium azide.

## Product Images

---



Western Blot analysis of MCF7 cells using Olfactory receptor 4C13 Polyclonal Antibody.