

ACRBP Antibody



PACO01272

Product Information

Size:

50ug

Reactivity:

Human

Source:

Rabbit

Isotype:

IgG

Applications:

ELISA, WB, IHC, IF

Recommended dilutions:

WB:1:500-1:2000, IHC:1:100-1:300,
IF:1:200-1:1000

Protein Background:**Gene ID:**

ACRBP

Uniprot

Q8NEB7

Synonyms:

ACRBP; Acrosin-binding protein; Cancer/testis antigen 23; CT23; Cancer/testis antigen OY-TES-1; Proacrosin-binding protein sp32

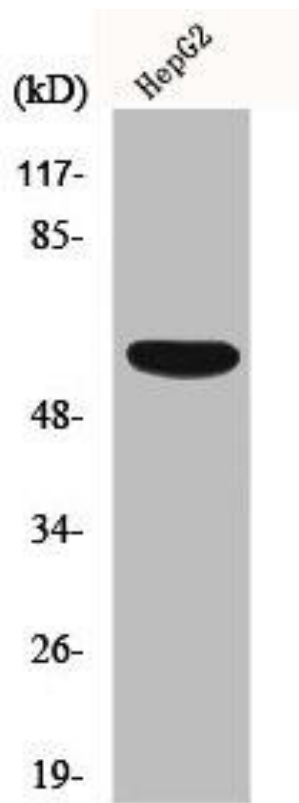
Immunogen:

Synthesized peptide derived from the Internal region of human OY-TES-1.

Storage:

Liquid in PBS containing 50% glycerol, 0.5% BSA and 0.02% sodium azide.

Product Images



Western Blot analysis of 293 cells using OY-TES-1 Polyclonal Antibody.