

P2RY11 Antibody



PACO01282

Product Information

Size:

50ug

Reactivity:

Human

Source:

Rabbit

Isotype:

IgG

Applications:

ELISA, WB

Recommended dilutions:

WB:1:500-1:2000

Protein Background:

Gene ID:

P2RY11

Uniprot

Q96G91

Synonyms:

P2RY11; P2Y purinoceptor 11; P2Y11

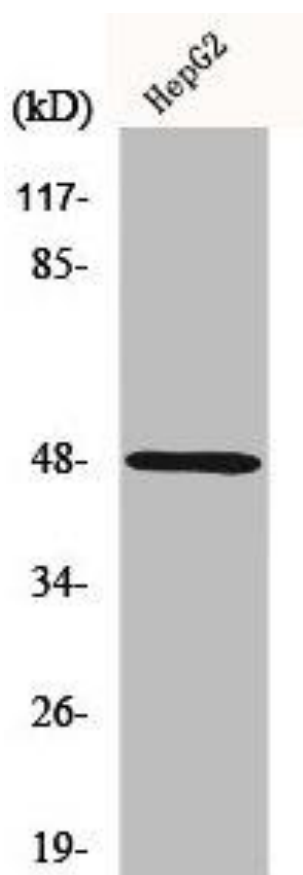
Immunogen:

Synthesized peptide derived from the Internal region of human P2Y11.

Storage:

Liquid in PBS containing 50% glycerol, 0.5% BSA and 0.02% sodium azide.

Product Images



Western Blot analysis of COLO205 cells using P2Y11 Polyclonal Antibody.