

# PFKFB1/PFKFB4 Antibody



PACO01324

---

## Product Information

**Size:**

50ug

**Reactivity:**

Human, Mouse, Rat

**Source:**

Rabbit

**Isotype:**

IgG

**Applications:**

ELISA, WB

**Recommended dilutions:**

WB:1:500-1:2000

**Protein Background:****Gene ID:**

PFKFB1/PFKFB4

**Uniprot**

P16118/Q16877

**Synonyms:**

PFKFB1; F6PK; PFRX; 6-phosphofructo-2-kinase/fructose-2; 6-bisphosphatase 1; 6PF-2-K/Fru-2,6-P2ase 1; PFK/FBPase 1; 6PF-2-K/Fru-2,6-P2ase liver isozyme; PFKFB4; 6-phosphofructo-2-kinase/fructose-2,6-bisphosphatase 4; 6PF-2-K/Fru-2,6-P2ase 4;

**Immunogen:**

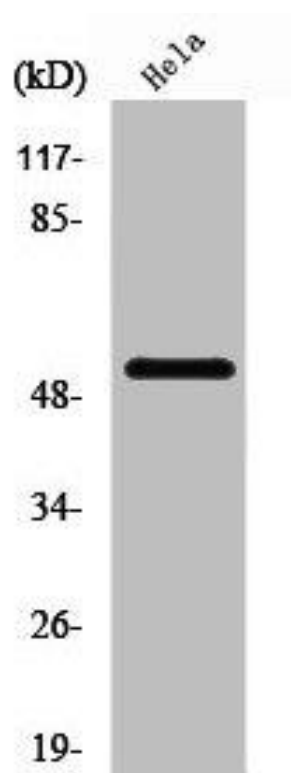
Synthesized peptide derived from the Internal region of human PFK-2 liv/tes.

**Storage:**

Liquid in PBS containing 50% glycerol, 0.5% BSA and 0.02% sodium azide.

## Product Images

---



Western Blot analysis of 293 cells using PFK-2 liv/tes Polyclonal Antibody.