

PGRMC2 Antibody



PACO01328

Product Information

Size:

50ug

Reactivity:

Human, Mouse, Rat

Source:

Rabbit

Isotype:

IgG

Applications:

ELISA, WB

Recommended dilutions:

WB:1:500-1:2000

Protein Background:**Gene ID:**

PGRMC2

Uniprot

O15173

Synonyms:

PGRMC2; DG6; PMBP; Membrane-associated progesterone receptor component 2; Progesterone membrane-binding protein; Steroid receptor protein DG6

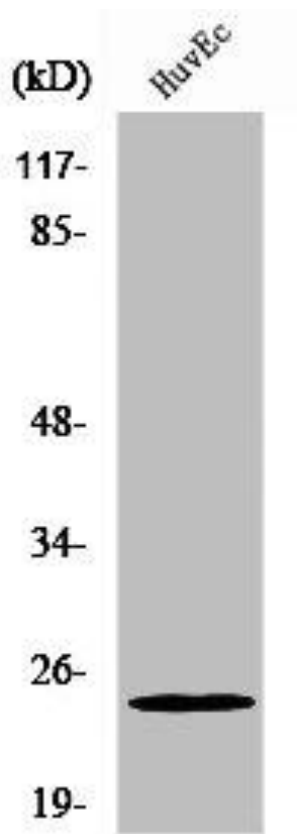
Immunogen:

Synthesized peptide derived from the C-terminal region of human PGRMC2.

Storage:

Liquid in PBS containing 50% glycerol, 0.5% BSA and 0.02% sodium azide.

Product Images



Western Blot analysis of HeLa cells using PGRMC2 Polyclonal Antibody.