

PGR Antibody



PACO01361

Product Information

Size:

50ug

Reactivity:

Human

Source:

Rabbit

Isotype:

IgG

Applications:

ELISA, WB, IHC, IF

Recommended dilutions:

WB:1:500-1:2000, IHC:1:100-1:300,
IF:1:200-1:1000

Protein Background:**Gene ID:**

PGR

Uniprot

P06401

Synonyms:

PGR; NR3C3; Progesterone receptor; PR; Nuclear receptor subfamily 3 group C member 3

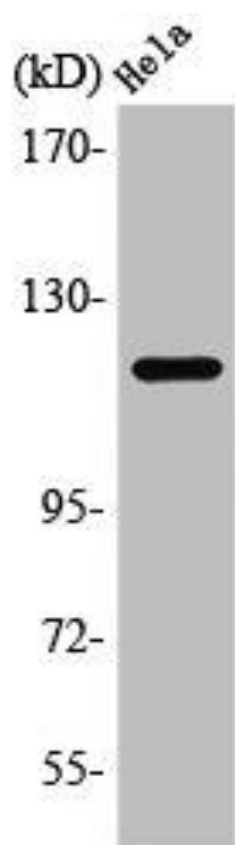
Immunogen:

Synthesized peptide derived from human PR around the non-phosphorylation site of S400.

Storage:

Liquid in PBS containing 50% glycerol, 0.5% BSA and 0.02% sodium azide.

Product Images



Western Blot analysis of HeLa cells using PR Polyclonal Antibody.