

RAB3GAP1 Antibody



PACO01382

Product Information

Size:

50ug

Reactivity:

Human

Source:

Rabbit

Isotype:

IgG

Applications:

ELISA, WB, IHC

Recommended dilutions:

WB:1:500-1:2000, IHC:1:100-1:300

Protein Background:

Gene ID:

RAB3GAP1

Uniprot

Q15042

Synonyms:

RAB3GAP1; KIAA0066; RAB3GAP; Rab3 GTPase-activating protein catalytic subunit; RAB3 GTPase-activating protein 130 kDa subunit; Rab3-GAP p130; Rab3-GAP

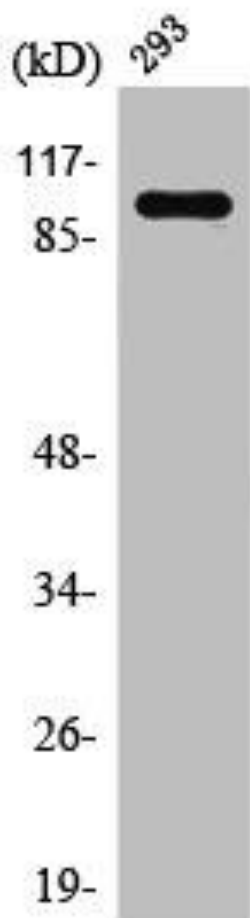
Immunogen:

Synthesized peptide derived from the Internal region of human Rab 3 GAP p130.

Storage:

Liquid in PBS containing 50% glycerol, 0.5% BSA and 0.02% sodium azide.

Product Images



Western Blot analysis of 293 cells using Rab 3 GAP p130 Polyclonal Antibody.