

# RAP2C Antibody



PACO01409

---

## Product Information

**Size:**

50ug

**Reactivity:**

Human, Mouse

**Source:**

Rabbit

**Isotype:**

IgG

**Applications:**

ELISA, WB

**Recommended dilutions:**

WB:1:500-1:2000

**Protein Background:**

**Gene ID:**

RAP2C

**Uniprot**

Q9Y3L5

**Synonyms:**

RAP2C; Ras-related protein Rap-2c

**Immunogen:**

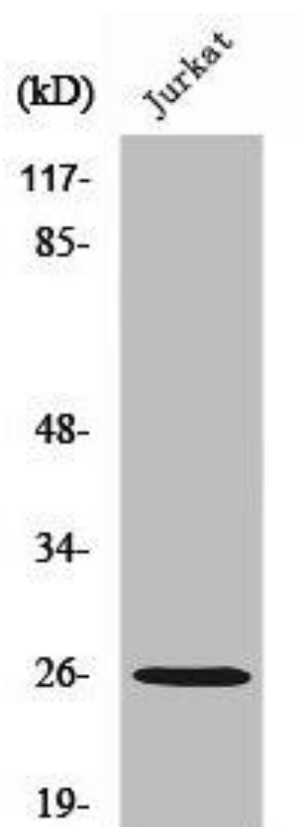
Synthesized peptide derived from the Internal region of human Rap 2C.

**Storage:**

Liquid in PBS containing 50% glycerol, 0.5% BSA and 0.02% sodium azide.

## Product Images

---



Western Blot analysis of MCF7 cells using Rap 2C Polyclonal Antibody.