

# CDCA2 Antibody



PACO01419

---

## Product Information

**Size:**

50ug

**Reactivity:**

Human

**Source:**

Rabbit

**Isotype:**

IgG

**Applications:**

ELISA, WB, IHC

**Recommended dilutions:**

WB:1:500-1:2000, IHC:1:100-1:300

**Protein Background:**

**Gene ID:**

CDCA2

**Uniprot**

Q69YH5

**Synonyms:**

CDCA2; Cell division cycle-associated protein 2; Recruits PP1 onto mitotic chromatin at anaphase protein; Repo-Man

**Immunogen:**

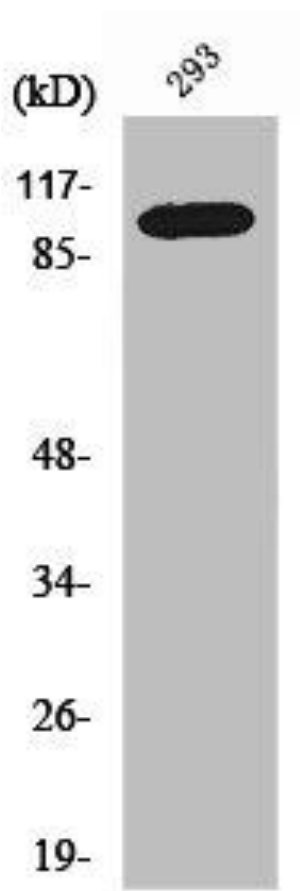
Synthesized peptide derived from the Internal region of human Repo-Man.

**Storage:**

Liquid in PBS containing 50% glycerol, 0.5% BSA and 0.02% sodium azide.

## Product Images

---



Western Blot analysis of 293 cells using Repo-Man Polyclonal Antibody.