

RGAG1 Antibody



PACO01425

Product Information

Size:

50ug

Reactivity:

Human, Mouse

Source:

Rabbit

Isotype:

IgG

Applications:

ELISA, WB

Recommended dilutions:

WB:1:500-1:2000

Protein Background:**Gene ID:**

RTL9

Uniprot

Q8NET4

Synonyms:

RGAG1; KIAA1318; Retrotransposon gag domain-containing protein 1; Tumor antigen BJ-HCC-23

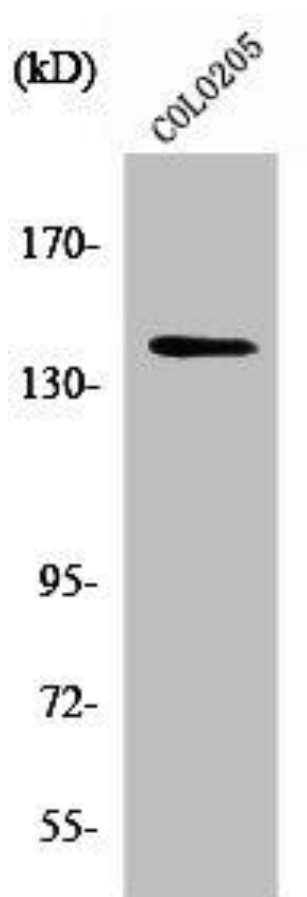
Immunogen:

Synthesized peptide derived from the C-terminal region of human RGAG1.

Storage:

Liquid in PBS containing 50% glycerol, 0.5% BSA and 0.02% sodium azide.

Product Images



Western Blot analysis of COLO205 cells using RGAG1 Polyclonal Antibody.