

# RHOBTB1/RHOBTB2 Antibody



PACO01431

---

## Product Information

**Size:**

50ug

**Reactivity:**

Human, Mouse

**Source:**

Rabbit

**Isotype:**

IgG

**Applications:**

ELISA, WB, IHC, IF

**Recommended dilutions:**

WB:1:500-1:2000, IHC:1:100-1:300,  
IF:1:200-1:1000

**Protein Background:****Gene ID:**

RHOBTB1/RHOBTB2

**Uniprot**

O94844/Q9BYZ6

**Synonyms:**

RHOBTB1; KIAA0740; Rho-related BTB domain-containing protein 1; RHOBTB2; DBC2; KIAA0717; Rho-related BTB domain-containing protein 2; Deleted in breast cancer 2 gene protein; p83

**Immunogen:**

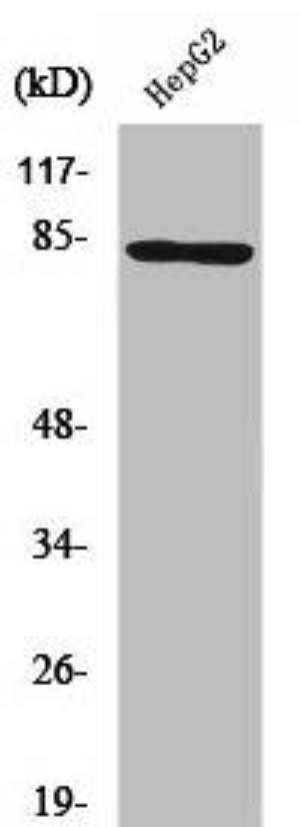
Synthesized peptide derived from the N-terminal region of human RhoBTB1/2.

**Storage:**

Liquid in PBS containing 50% glycerol, 0.5% BSA and 0.02% sodium azide.

## Product Images

---



Western Blot analysis of HeLa cells using RhoBTB1/2 Polyclonal Antibody.