

RHO Antibody



PACO01433

Product Information

Size:

50ug

Reactivity:

Human, Mouse, Rat

Source:

Rabbit

Isotype:

IgG

Applications:

ELISA, WB, IHC

Recommended dilutions:

WB:1:500-1:2000, IHC:1:100-1:300

Protein Background:

Gene ID:

RHO

Uniprot

P08100

Synonyms:

RHO; OPN2; Rhodopsin; Opsin-2

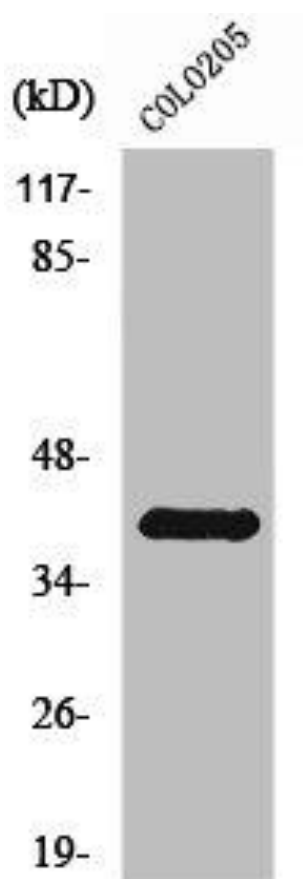
Immunogen:

Synthesized peptide derived from human Rhodopsin around the non-phosphorylation site of S334.

Storage:

Liquid in PBS containing 50% glycerol, 0.5% BSA and 0.02% sodium azide.

Product Images



Western Blot analysis of COLO205 cells using Rhodopsin Polyclonal Antibody.