

RPL26L1 Antibody



PACO01438

Product Information

Size:

50ug

Reactivity:

Human, Mouse, Rat

Source:

Rabbit

Isotype:

IgG

Applications:

ELISA, WB, IHC

Recommended dilutions:

WB:1:500-1:2000, IHC:1:100-1:300

Protein Background:

Gene ID:

RPL26L1

Uniprot

Q9UNX3

Synonyms:

RPL26L1; RPL26P1; 60S ribosomal protein L26-like 1

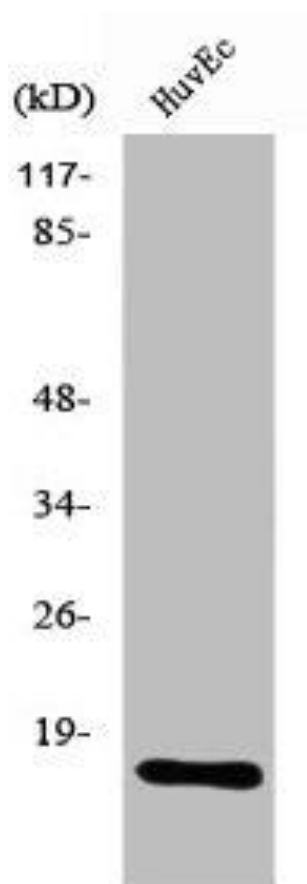
Immunogen:

Synthesized peptide derived from the C-terminal region of human Ribosomal Protein L26L.

Storage:

Liquid in PBS containing 50% glycerol, 0.5% BSA and 0.02% sodium azide.

Product Images



Western Blot analysis of MCF7 cells using Ribosomal Protein L26L Polyclonal Antibody.