

# POLR2A Antibody



PACO01462

---

## Product Information

**Size:**

50ug

**Reactivity:**

Human, Mouse, Rat, Monkey

**Source:**

Rabbit

**Isotype:**

IgG

**Applications:**

ELISA, WB, IHC, IF

**Recommended dilutions:**

WB:1:500-1:2000, IHC:1:100-1:300,  
IF:1:200-1:1000

**Protein Background:****Gene ID:**

POLR2A

**Uniprot**

P24928

**Synonyms:**

POLR2A; POLR2; DNA-directed RNA polymerase II subunit RPB1; RNA polymerase II subunit B1; DNA-directed RNA polymerase II subunit A; DNA-directed RNA polymerase III largest subunit; RNA-directed RNA polymerase II subunit RPB1

**Immunogen:**

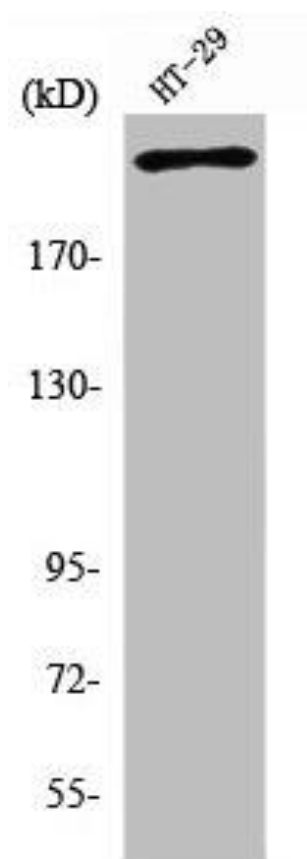
Synthesized peptide derived from human Rpb1 around the non-phosphorylation site of S1619.

**Storage:**

Liquid in PBS containing 50% glycerol, 0.5% BSA and 0.02% sodium azide.

## Product Images

---



Western Blot analysis of HT29 cells using Rpb1 Polyclonal Antibody.