

# RSAD1 Antibody



PACO01463

---

## Product Information

**Size:**

50ug

**Reactivity:**

Human, Mouse

**Source:**

Rabbit

**Isotype:**

IgG

**Applications:**

ELISA, WB, IHC

**Recommended dilutions:**

WB:1:500-1:2000, IHC:1:100-1:300

**Protein Background:****Gene ID:**

RSAD1

**Uniprot**

Q9HA92

**Synonyms:**

RSAD1; Radical S-adenosyl methionine domain-containing protein 1; mitochondrial; Oxygen-independent coproporphyrinogen-III oxidase-like protein RSAD1

**Immunogen:**

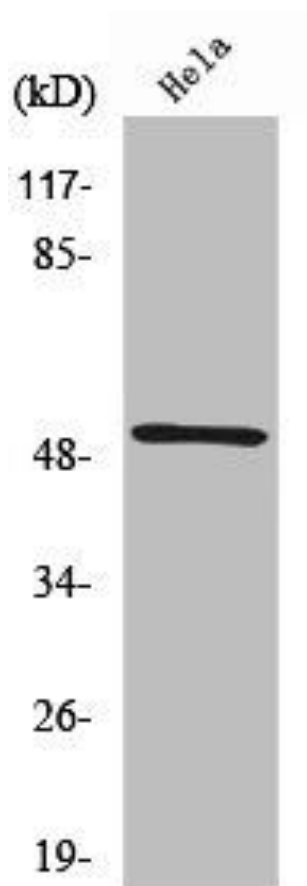
Synthesized peptide derived from the Internal region of human RSAD1.

**Storage:**

Liquid in PBS containing 50% glycerol, 0.5% BSA and 0.02% sodium azide.

## Product Images

---



Western Blot analysis of HeLa cells using RSAD1 Polyclonal Antibody.